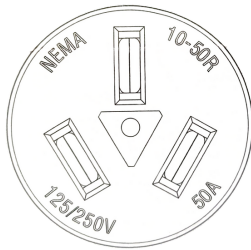
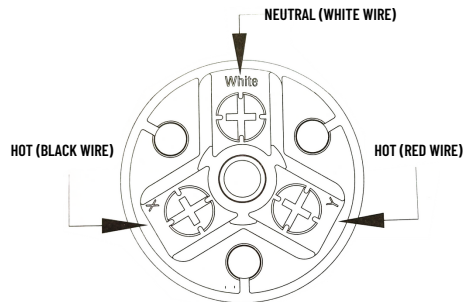


RANGE RECEPTACLE SD61261 3 WIRE 50 AMP

FRONT VIEW



BACK VIEW



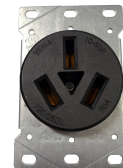
PACK CONTENTS



x4

MOUNTING SCREW

x1



FLUSH OUTLET

SAFETY INFORMATION

PLEASE READ AND UNDERSTAND THIS ENTIRE MANUAL BEFORE ATTEMPTING TO ASSEMBLE, OPERATE, OR INSTALL THIS PRODUCT.

WARNING: TO AVOID FIRE, SHOCK, OR DEATH; TURN OFF POWER AT CIRCUIT BREAKER OR FUSE AND TEST THAT POWER IS OFF BEFORE WIRING.

PREPARATION

BEFORE BEGINNING INSTALLATION OF PRODUCT, MAKE SURE ALL PARTS ARE PRESENT. COMPARE PARTS WITH PACKAGE CONTENTS LIST. IF ANY PART IS MISSING OR DAMAGED, DO NOT ATTEMPT TO ASSEMBLE, INSTALL, OR OPERATE THE PRODUCT.

ESTIMATED ASSEMBLY TIME: 10 MINUTES

TOOLS REQUIRED FOR ASSEMBLY (NOT INCLUDED): SCREWDRIVER, WIRE STRIPPER.

INSTALLATION INSTRUCTIONS

1. STRIP 6 INCHES OF SHEATHING OFF THE CABLE AND FEED IT THROUGH THE RECEPTACLE CLAMP. GENTLY TIGHTEN THE CLAMP, ENSURING THE SECTION OF CABLE GRIPPED BY CLAMP IS STILL SHEATHED.
2. BEND THE INDIVIDUAL WIRES SO THEY ALIGN TO THEIR SLOTS. TYPICALLY, PRINTING ON THE RECEPTACLE BASE TELLS YOU WHICH COLORED WIRE GOES WHERE. IT MAKES NO DIFFERENCE WHICH COLORED HOT WIRE GOES TO WHICH SLOT, AS THERE IS NO POLARITY.
3. ONCE YOU'VE ALIGNED INDIVIDUAL WIRES TO THEIR RESPECTIVE TERMINAL SLOTS, CUT THEM TO LENGTH. THE RECEPTACLE COVER LEAVES LITTLE ROOM TO FOLD WIRES, AND 8#-4# AWG IS STIFF, SO KEEP WIRE AS SHORT AS POSSIBLE. THEN STRIP A 1/2 INCH OF INSULATION OFF THE END OF EACH WIRE.
4. PUSH EACH BARE WIRE END DOWN INTO ITS SLOT. TO DO THIS, LOOSEN THE SCREW-TIGHTENING MECHANISM IN THE SLOT AND SWIVEL IT UP AND OUT OF THE WAY. ONCE THE WIRES HAVE BEEN PLACED, SWIVEL THE MECHANISM INTO PLACE AND TIGHTEN THE SCREWS ONTO THE BARE WIRE ENDS. TIGHTEN TERMINAL SCRES TO 25 LB-IN (2.8N-m).
5. REPLACE THE COVER AND TIGHTEN THE LONG ATTACHMENT SCREW THAT HOLDS THE COVER TO THE BASE.